

**Institute of  
Psychological Sciences**



**BSc Psychology**

**BSc Psychology  
(International)**

# Psychology at Leeds

The Institute of Psychological Sciences at the University of Leeds is a distinguished research and teaching establishment. Housed in our own buildings, with bespoke teaching spaces, state-of-the-art research facilities and impressive computing access, we extend outstanding opportunities to students to learn about, and engage in, contemporary psychology.

Our vibrant, world-leading research spans three major areas of psychology - biological psychology, cognitive psychology and health & social psychology. Extensively supported by both national and international funding, our research addresses a multitude of cutting-edge questions from the fundamental nature of the human brain to the testing of applied interventions to promote well-being and health.

Our aim is to inspire students to develop to their full potential. Capitalising on our research excellence and expertise, our degree programme is delivered by leading researchers, knowledgeable in the latest advances in psychology. We adopt an apprenticeship approach to the study of scientific methods of psychological inquiry, and students prosper through the design and management of their own research and by making use of the range of research expertise and facilities available in the Institute.

Our objective is to foster in students an analytical and critical approach to psychology, to equip them with up-to-date knowledge of psychology and how to study it, to appreciate the interface between the mind, body and behaviour, and to confidently progress the contribution of psychology to individual and societal well-being.

## Contents

- 3 BSc Psychology
- 5 BSc Psychology (International)
- 6 Why Leeds
- 8 Entry requirements & how to apply



## Overview

Psychology is an exciting, expansive and progressive scientific discipline. To reflect this, undergraduate study of psychology at Leeds draws not only upon core psychology, but also upon aspects of biology, physiology, pharmacology, neuroscience, animal behaviour, linguistics and forensics, as well as applied concerns such as health behaviour, medical error and product design, all underpinned by commitment to theory and sound evidence.

Thus, our undergraduate degree not only addresses a diverse range of topics but also involves substantial training in how to design, conduct and analyse high quality research. This research methods training involves considerable hands-on experience, culminating in students conducting a piece of independent research in the final year of their degree.

Psychology as a profession and discipline of academic enquiry also demands excellent communication skills to present sound arguments, explain findings and discuss research implications. Therefore, our undergraduate students are supported in becoming articulate and proficient communicators.



The  
British  
Psychological  
Society

Our undergraduate programmes are accredited by the British Psychological Society.

**“ All the staff are very enthusiastic and very knowledgeable about what they are teaching. The practical sessions are very well run and are a brilliant chance for students to get some hands on experience. The course is very varied and presents students with a broad range of areas within psychology. ”**

Level 2 Student  
Programme Survey 2009

## Degree Structure

The degree (UCAS C800) is three years (termed levels), full-time, with two semesters per year (Sept-Jan; Feb-May). Teaching units are called modules and are worth either 10, 15 or 30 credits. Modules in semester 1 are examined in January and those from semester 2 are examined in May/June. Students must pass 100 credits in each level in order to progress.

**“ Many of my lecturers have been extremely passionate and enthusiastic about their subject and therefore made lectures highly enjoyable. I've also been able to look at a wide breadth of topics in such a short space of time, which definitely kept the course interesting and moving at a good pace. ”**

Level 1 Student  
Programme Survey 2009

## How students learn

Students are engaged in learning about psychology, and the scientific methods underpinning it, through diverse methods, including:

- reading core, classic and contemporary publications
- designing, conducting and analysing research
- using lectures to focus further research and reading
- preparation for, and participation in, seminars
- designing and delivering presentations
- discussions in groups and personal tutorials
- engagement with on-line activities to tailor learning
- preparing for coursework and examinations
- reflecting on, and developing from, feedback on coursework




# BSc Psychology

## How students are supported

New students are welcomed into the Institute via tutorials with their personal tutor, who continues to meet with them during their degree to consider their progress and identify areas to develop. Professional development is also supported from the outset in our Professional Skills for Psychologists module at Level 1. Additional, targeted support for academic development is available on-line, where students can access excellent resources including how to get quicker at reading, how to judge the quality of information and how to write for science disciplines. Dedicated support is available in the Institute and in the University for students with particular needs.

## How students are assessed

Students are assessed at many points throughout the degree and are supported in understanding the purpose, format and grading of assessments. Assessment begins in the form of multiple choice exams, short reports and essays, and progresses onto more substantive pieces of work, such as larger research reports, examinations, presentations and research protocols.



“The curriculum now offers an excellent coverage of core topic areas whilst maximising the extent to which students learn from the particular expertise and specialisms of staff at Leeds”

Professor Dorothy Miell  
External Examiner 2010  
The Open University

## Level 1 Modules

Psychology at Leeds  
Developmental Psychology  
Research Skills  
Social Psychology  
Cognitive Psychology  
Biological Psychology  
Perception  
Professional Skills for Psychologists

## Level 2 Modules

Research Skills  
Memory & Language  
Perception & Action  
Psychological Disorders  
Advanced Social Psychology  
Mini Project  
Neuroscience 1: Human Cognition  
Neuroscience 2: Animal Cognition  
Personality & Intelligence  
*Plus one of:*  
Forensic Psychology  
Psychology in the Media  
Sports & Exercise Psychology

## Level 3 Modules (including a Final Year Project)

### Health / Social Psychology

Approaches to Nutrition & Behaviour; Health Psychology; Applied Psychology; Reproductive Psychology; Occupational Health Psychology

### Biological Psychology

Contemporary Learning Theory; Drug Addiction  
Drugs; Hormones & Behaviour; The Spatial  
World; Biopsychology of Human Appetite;  
Evolutionary Psychology

### Cognitive Psychology

Current Themes in Cognitive Science; Reasoning  
& Decision Making; Remembering & Knowing;  
Psychology of Design; Motor Learning in Children  
and Adults with Disability; Auditory Perception &  
Cognition

*(modules are subject to change)*

# BSc Psychology (International)

## Overview

Our BSc Psychology (International) is identical to the BSc Psychology degree except that it includes one year of studying psychology at another university outside of the UK. There are four exchange partners in Europe (Belgium, Germany, Norway and Spain) and over 200 outside Europe, including Canada, Singapore and the United States.

## Degree Structure

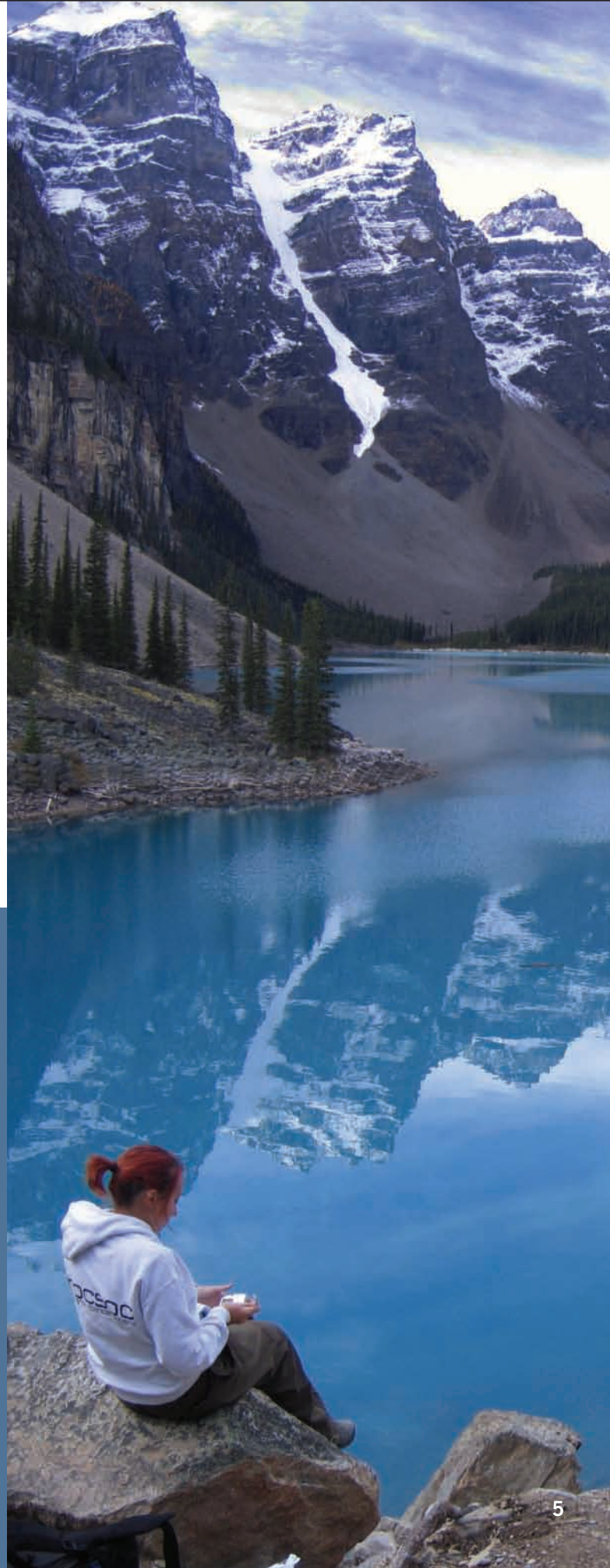
All students initially register on the BSc Psychology degree programme (C800). If a student's achievement at the end of semester 1 in Level 2 is regarded as satisfactory, s/he can transfer onto the BSc Psychology (International) programme.

The content and classification of the BSc Psychology (International) degree is identical to that for the BSc Psychology degree. All modules taken at Levels 2 and 3 in Leeds (Years 2 and 4) contribute towards the classification of the BSc Psychology (International). Grades awarded during the study abroad year do not contribute to the degree classification. However, to be awarded the International degree students must pass their year abroad.

Detailed information is available on our website ([www.psyc.leeds.ac.uk](http://www.psyc.leeds.ac.uk)) or via the Study Abroad Office ([www.leeds.ac.uk/studyabroad/](http://www.leeds.ac.uk/studyabroad/)).

“The year abroad programme gave me an amazing opportunity. Being able to study under some of the world's paramount researchers, with great resources, in a wide range of topics really improved the breadth and depth of my knowledge and understanding of psychology.”

James Briggs,  
Study Abroad Year at the  
University of California



# Why Leeds

## Achieve and Succeed

Our consistent success in research, our high quality of teaching, our commitment to an engaging student experience and the impressive academic performance of our graduates render the Institute of Psychological Sciences at Leeds an inviting and promising place of study for potential students.

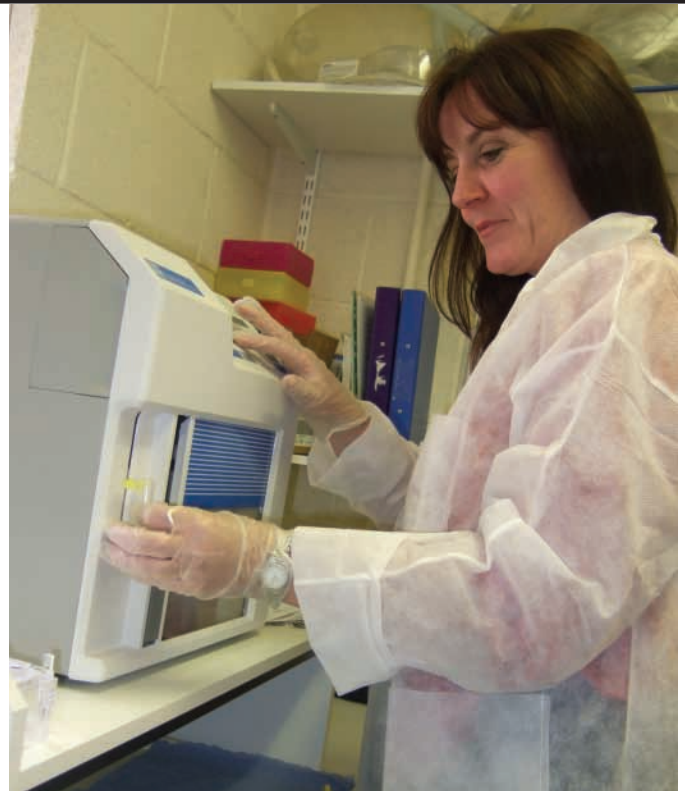
In terms of research, we were ranked 11th among 76 Psychology departments in the UK in terms of Research Power in the 2008 Research Assessment Exercise (RAE). During the assessment period (2001-2008), members of the Institute were awarded over £6m in research income and authored over 500 journal articles. The Institute's success in RAE2008 reflects our continuing and growing strength in research achievement, building on the 'Excellent' (5) rating in the previous RAE.

In terms of teaching and student experience, our External Examiners (senior academics from other institutions who examine our degree) are consistently impressed by the undergraduate degree structure, the quality of teaching, and the performance of our students. They say we provide:

- excellent student performance, with students achieving at the highest standards
- evidence of continuous enhancement of teaching & learning
- excellent student experience
- a thorough and well-rounded understanding of cutting-edge psychology

Across a number of surveys, current and past students comment very positively on the breadth of topics covered, the commitment and enthusiasm of staff and the ways that they have been engaged in learning.

Typically, more than 20% of our students graduate from our undergraduate degree programmes with first class honours, and more than 60% graduate with a 2:1 degree. The ability of our final year students to produce outstanding research projects has been commented upon by our External Examiners, and reflects the underpinning of Psychology at Leeds with a research-led, scientific approach to study. Some of our top undergraduate students are nominated for, and are often successful in getting, external awards, for example, from the British Psychology Society or the Experimental Psychology Society.



## A Return on Your Investment

Choosing to study Psychology at Leeds represents a sound investment. You will be taught by research-active experts in contemporary psychology, in a way that prioritises the strong scientific underpinnings of the discipline. You will have access to up-to-date facilities, including computing, libraries, skills centres, testing spaces, laboratories and state-of-the-art equipment. You will accrue a portfolio of important skills that are highly attractive to a diversity of employers, including:

- research design and statistical skills
- measurement skills
- information retrieval, organisation and critical evaluation
- ethical awareness and decision-making
- creative thinking and resourcefulness
- management of time, projects and workloads
- communicating in written and verbal forms
- working to deadlines
- negotiation and decision-making skills
- working in a range of contexts (independently, under supervision and with others)
- personal management and development
- a Graduate Basis for Chartership (GBC), as defined by the BPS, which enables you to start in an assistant psychologist post.

We know that most students do a degree to optimise their chances of working in their desired field. Thus, employability is built into our degree from the outset, through our Professional Skills modules, and is supported further via our Careers Advisor and the University's Careers Centre.

Our graduates are highly successful in gaining employment, or in accessing further qualifications. Some go on to train as professional psychologists in Clinical, Counselling, Occupational, Educational, Health, Forensic or Sport Psychology. To do so typically requires one to three years of study after an undergraduate degree.

However, many graduates do not wish to pursue these routes, and instead move into other career paths where they can apply skills of research design, data analysis, report writing, computing and communication skills as well as the extensive knowledge of psychology that they have developed. Our graduates have chosen careers in teaching, health care, management consultancy, marketing, personnel, business, advertising, social care and many others.

Our own research shows that employers across diverse areas are impressed by the range of skills and knowledge that Leeds psychology graduates have to offer.

### Is Psychology at Leeds right for you?

Choosing a university can be a stressful process, largely because you have to make decisions based on your best judgement of the information you have been given. In considering whether Psychology at Leeds is right for you, it may help you to consider whether you are the type of student who:

- thinks scientifically; in other words, looks for logical, causal, evidence-based explanations.
- appreciates the importance of developing rigorous methods of research so that we can be confident in our claims about human behaviour and mental processes.
- is able to read a substantial amount of information, digest it, and evaluate it.
- can tolerate multiple explanations, partial explanations and competing explanations for behaviour.
- is task focused; in other words, can understand what is required and knows the stages involved in delivering that.
- is confident in working with numbers, statistics and notions of probability.
- is able to engage with aspects of biology, physiology, animal behaviour, linguistics and pharmacology.
- is willing to think in an integrated manner, for example, to consider how biological, social and psychological processes might interact to produce a certain behaviour.

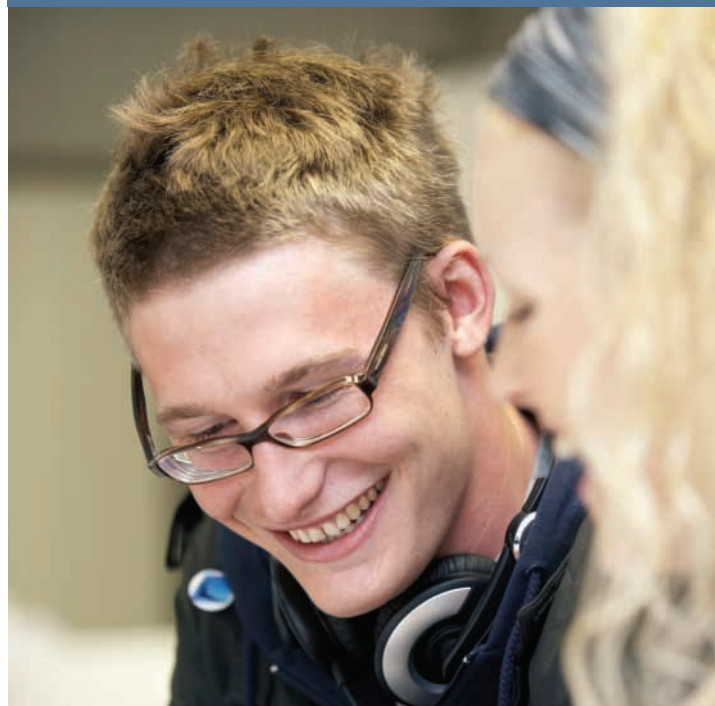
### University Life

The University of Leeds is one of the largest and most successful universities in the UK with a long, established international reputation for the high standard of its teaching and research. It is a member of the Russell Group, which is formed by 19 of the country's most prestigious universities. Situated in one of the North of England's most prosperous cities, the University of Leeds has over 32,000 students, provides over 700 undergraduate courses and is one of the main centres for postgraduate teaching in the country. In order to facilitate high-quality learning, teaching and research, our students have access to outstanding resources. The library is one of the largest university libraries in the UK, with a stock of over 2.8 million items, a wide range of databases, electronic journals and full-text electronic resources that are available campus-wide and many are accessible remotely by members of the University. The University also offers first class sports facilities as well as one of the largest and most active Student's Union in the country.

For more details see: [www.leeds.ac.uk](http://www.leeds.ac.uk)

### Accommodation

Unlike many other universities we guarantee accommodation to all full-time, first year undergraduate students that have accepted an offer from the Institute of Psychological Sciences. For details about the accommodation available and closing dates for applications, please see: [www.leeds.ac.uk/accommodation/](http://www.leeds.ac.uk/accommodation/)



# Entry Requirements & How to Apply

## A levels: AAB

Applicants must study **one of the following** subjects: Psychology, Geography, Mathematics, Chemistry, Biology, Physics. We do not accept A-Levels in Critical Thinking, General Studies, or any AVCE-DA (dual award vocational qualifications).

We do not consider applicants studying two performance based A-Levels e.g. photography and drama, to have the appropriate academic training and/or skills to succeed in studying Psychology at Leeds.

In addition, applicants **must also have** GCSE English at grade C and GCSE Mathematics at grade B, and **two of the following at grade B:** GCSE Physics, GCSE Biology, GCSE Chemistry, GCSE Science and GCSE additional Science (or GCSEDA Science (dual award) at grades BB).

**ACCESS to HE Diploma:** applicants must pass the Access course with 45 Level 3 credits with an average grade of distinction. For science-based Access course, applicants also need GCSE Mathematics at grade B and English at grade C. For non-science Access courses, applicants need either GCSEDA Science (at grades BB) or two of the following at grade B (GCSE Physics, GCSE Biology, GCSE Chemistry, GCSE Science and GCSE Additional Science).

**International Baccalaureate:** applicants must attain 35 points with no less than 5 points awarded to any subject. Applicants must study a science subject at higher level.

**Scottish Highers & Advanced Highers:** AAB, including one science subject, plus Ordinary Science and Mathematics at grade B.A mixture of Highers and Advanced Highers will be considered on an individual basis.

**BTEC:** qualifications must be science based and passed with distinction. Advanced Diploma: at the present time we do not accept the Advanced Diploma qualification for entry.

**Irish Leaving Certificate:** AAAABB

**The University of Leeds Interdisciplinary Science foundation year:** includes the compulsory subjects of Biology, Chemistry, Mathematics and transferable skills. Students must achieve an overall average grade of 65% and no less than 65% in Mathematics. For more information please see [www.leeds.ac.uk/cjh/foundation](http://www.leeds.ac.uk/cjh/foundation) or email Julie Winterburn [atj.a.winterburn@leeds.ac.uk](mailto:atj.a.winterburn@leeds.ac.uk)

Detailed information on admissions is provided on our website at [www.psync.leeds.ac.uk](http://www.psync.leeds.ac.uk).

We welcome applications from candidates of all social and ethnic backgrounds and are committed to the promotion of equal opportunities. We also welcome candidates who have disabilities and/ or specific needs. The Institute is wheelchair accessible.

All candidates should have had some experience of study within the last three years. Non-standard candidates may be invited for interview with the Admissions Tutor to discuss their applications. We accept applicants wishing to defer entry.

Admissions to the Leeds C800 Psychology programme should be made through UCAS (Universities and Colleges Admissions Service). [www.ucas.com](http://www.ucas.com)

## International equivalents

English proficiency (TOEFL 600 or IELTS 7.0) is a requirement for international students. For advice about international qualifications please contact Alison Tindall at [a.j.tindall@leeds.ac.uk](mailto:a.j.tindall@leeds.ac.uk)

## Open Days

All students to whom we make an offer will be invited to an open day in the Institute and given the opportunity to view facilities and meet with current undergraduates and staff.

Students and their families are also warmly invited to come along to the University-wide open days which offer an excellent opportunity to see important aspects of the University, such as student accommodation, library facilities and the sports facilities, as well as having the chance to visit the Institute. For details, see [www.leeds.ac.uk/visitus](http://www.leeds.ac.uk/visitus). Unfortunately, we are unable to accommodate individual visits to the Institute.

For more information please contact:

Alison Tindall, Undergraduate Admissions  
Institute of Psychological Sciences  
University of Leeds, Leeds LS2 9JT.  
[a.j.tindall@leeds.ac.uk](mailto:a.j.tindall@leeds.ac.uk)  
Tel: +44(0)113 343 5719



UNIVERSITY OF LEEDS

Institute of Psychological Sciences  
University of Leeds, Leeds LS2 9JT, UK  
t + 44 (0) 113 343 5724  
f + 44 (0) 113 343 5749  
e [psync-enquiries@leeds.ac.uk](mailto:psync-enquiries@leeds.ac.uk)  
[www.psync.leeds.ac.uk](http://www.psync.leeds.ac.uk)